



PARENT NEWS

www.milton-p.schools.nsw.gov.au

MILTON PUBLIC SCHOOL
THOMAS STREET
(PO Box 111)
MILTON NSW 2538

PHONE: (02) 44551504
(02) 44551433
FAX: (02) 44540456

Term 1 Week 2

Tuesday 4th February 2020.

A Message from the Principal

Many families within our community have been impacted by the fires that ravaged our beautiful coastline over the Christmas holidays. In addition to the 19 students who have lost homes, we have 2 staff members who also lost everything.

Of course the impact of this fire goes beyond those who lost homes, and would include families who have suffered financially and emotionally.

Our thoughts are with you all and we will do everything we can, as a community, to help you through this tragedy.

A Bendigo Bank account has been established, jointly managed by the Milton Parents & Citizens Association and the school, to collect and distribute funds to support Milton PS students who lost homes. Our aim is to raise enough money to ensure all associated costs to do with education (shoes, stationery, bags, excursions etc), are paid for from this account. We have already made an initial payment to help with some of these back-to-school items.

If you would like to donate, the BSB is 633 000 with account number 171160492.

Thank you to those who have already generously donated to this cause.

Apart from the issues around the fire, the 2020 school year has started off really well with all students now placed in their class for the year. You would understand that, unless there are extremely extenuating circumstances, we are not able to move children from one class to another at parent's request.

Teachers will be contacting you in the near future to arrange a time to meet to go through the various routines, organisation and class expectations. There will also be a Q&A session during these meetings to ensure a smooth transition to the new school year.

If your child has any specific or special needs, please make sure you speak with his/her teacher ASAP so we can work together to support your child.

A very special welcome to our new families joining us this year. If there is anything more we can do to help you settle into our great school, please let us know.

A warm welcome to our 2020 Kindy class. Our 100 Kindy students started this week and from all accounts they did very well. I've been told there were more tears from the mums and dads than from the kids. Any feedback around our Kindy transition program and 'First Day of School' organisation is appreciated. Thank you Mrs Lawlor and your Kindy team for organising the coffee cart and photo booth and to the P&C for supplying some yummy treats.

WHAT'S HAPPENING THIS WEEK

WEDNESDAY

THURSDAY

FRIDAY

MONDAY

- K-6 Assembly
- Life Education

TUESDAY

- Life Education
- School Banking—Bendigo Bank

BIG NEWS!

MPS Bushfire Relief Event Sunday 9th February Mini Concert 12:00—3:00pm in the school hall

Milton Public School in conjunction with Sony Music and A Current Affair are proud to present a free mini concert and BBQ featuring the ARIA hall of Fame band, 'HUMAN NATURE'! Having just opened for the Men's Final on Rod Laver Arena at the Australian Tennis Open, Human Nature are set to perform 2 or 3 of their hit songs, sing with our school choirs and jam with our band. All community members welcome! We hope to lift the spirits of all members in our community! Come on down and enjoy this major event!



P&C Meeting
Tonight 7pm in the staffroom
Milton Show Meeting
All Welcome

COMING EVENTS

Life Education
Weeks 3-5

District Swimming
25th February

South Coast Swimming
11th March

Congratulations to the Sports Captains for 2020

Cook

Captains: Annie-Maree and Lachlan

Vice Captains: Mia and Logan

Flinders

Captains: Zara and Harry

Vice Captains: Jayden and Sophie

Bass

Captains: Rory and Judah

Vice Captains: Evie, Lily and Akasha

Tasman

Captains: Montana and Lewis

Vice Captains: Hayley and Blair

War on Waste: WOW!

Staff Room: Kai, Jaya

Compost: Mia, Millah, Summer, Paige, Asha

Return and Earn: Alysha, Kaydee

Soft Plastics: Charli, Sienna, Bernie

Grey tubs: Hunter, Jonathan, Jack

K-2 Mirida Kids Artwork

The K-2 Mirida Kids and friends completed a beautiful artwork with the artistic direction of Mrs Knight, Mrs Hicks, Miss Moloney and Mrs Rafidi. The artwork represents Milton PS as a meeting place which is protected by 'Mirida' the sea eagle and includes the K-2 Mirida kids names inscribed into the waves of the ocean. It is a wonderful example of some of the exciting opportunities our Aboriginal kids and friends can access during lunchtime and class-time Mirida Kids club. Congratulations to the teachers and all of the students involved in this artwork. It will be proudly displayed in our office area.



Life Education

Happy Harold will again be visiting the students at Milton Public School from Monday 11th Feb to Thursday 28th February. The van will be set up outside the Kindergarten rooms over the weekend and will be ready to commence lessons from Monday morning.

Life Education has been supporting students with Drug and Health Education programs since 1979. These lessons have been successfully integrated into our Health and Personal Development programs for each grade and we are committed to continuing this organisation for 2019. All students are required to attend. The cost of the program is \$8.00. Permission notes will be sent home with students this week and we would appreciate your payment as soon as possible, preferably prior to your child attending. The timetable and information regarding Harold Merchandise will be included with the permission note. All proceeds from the sale of these items support Life Education within our local area.

Desperately Seeking Volunteers

Our wonderful school canteen, run by Bec Brook, desperately needs helpers. Bec simply cannot work the canteen on her own and she needs at least one volunteer each day. Friday is the canteen's busiest day. Could you please help Beck and our school out? Even if it is only for an hour or two. Please consider next week or the week after. Please do not rely on the same people to help. If YOU can help once or twice and everyone who has a spare day can volunteer, then we would be well on our way to supporting BEC and OUR kids.

Crunch and Sip

Crunch and Sip is a program that runs every day in our classrooms. Students are able to eat some fruit or vegetables and sip some water. This helps students not only with nutrition, but also with concentration levels.

Please be reminded that fruit or veges should be pre-cut, bite sized pieces or smaller fruit such as berries sent in a small container that can be consumed whilst working - Not full fruit such as apples/oranges/peaches still on the core/seed that take the children too long to consume.

School Attendance - Every Day Counts

It is vital that students attend every school day to ensure consistency and continuity in their learning and to help develop positive relationships with their peers and teachers. It is a legal requirement that a note of explanation be provided if your child is absent from school (on the day they return to school). An explanation will outline the reasons your child/children were away. It is no longer acceptable to simply state "sick". You will be asked to provide a medical certificate from your G.P. for longer periods of absence due to illness (3 days or more). Please discuss with your child the importance of daily attendance. Avoid 'days off' for birthdays, shopping etc... wherever possible. Our main priority is to see that students achieve their potential and this is certainly possible when there is minimal disruption to their learning. Our Home School Liaison Officer conducts regular roll audits and you may be requested to a meeting if school absenteeism becomes a concern. We appreciate your support and cooperation in this very important matter.

School Hats

The warmer weather is upon us, so it is paramount that students wear a blue school hat at all times when outside. As previously advised the school uniform policy requires a broad brimmed royal blue hat, but we have accepted the bucket style hat also. This policy has been developed in line with the Department of Education's Sun Safe regulations. Students will not be permitted to play on the oval or open areas without a school hat. The bucket hat with gold piping is available from the front office at a minimal cost of \$6.00. We thank you for your support.

A reminder that School zones are back in force!

Motorists are reminded 40km/h speed limits will be operating in school zones from Tuesday 29 January for the commencement of Term one. Most 40km/h School zones in our region operate between 8am to 9.30am and 2.30pm to 4pm on all gazetted school days. There are a small number of schools that operate nonstandard school zone times in NSW, which are identified by red/orange school zones signs showing the times. The 40km/h school zone speed limit must be observed even on student free days and if school children cannot be seen. Higher fines and demerit points apply if you are caught speeding in a school zone. For more information on keeping kids safe in school zones please visit NSW Centre for Road Safety <http://roadsafety.transport.nsw.gov.au/> So keep our children safe, slow down and obey the road rules in school zones. A message from Shoalhaven City Council Road Safety Officer. #Towards zero

Phonics and Spelling Program - Sound Waves

Sound Waves is a word study program designed to develop reading, spelling and writing skills through phonemic awareness. Phonemic awareness is essentially a knowledge and understanding of the sounds and sound patterns of our language.

The Sound Waves approach uses a sound-to-letter strategy, which acknowledges that sounds can be represented in more than one way in written form. The Sound Waves approach focuses first on the basic units of sound in our language - phonemes. It then explores the letters that represent these sounds and how they can be put together to form the written words in our language.

Each week the whole school will be focusing on one sound and the letters or letter combinations that represent that sound. This sound and some examples will be published in the newsletter so that parents and carers can help their child discover more words at home.

Term 1

Week 2 - Getting Started

Week 3 - b, bb for **balloon**

Week 4 - a for **apple**

Week 5 - k, c, q, ck, x(ks), ch for **kite**

Week 6 - e, ea for **egg**

Week 7 - d, dd for **duck**

Week 8 - i for **igloo**

Week 9 - f, ff, ph for **fish**

Week 10 - o, a for **orange**

Week 11 - g, gg for **girl**

2020 Dance Team

This year the school dance team will be organised by Miss Howes and Ms Nyholm. We will be entering the team into the Shoalhaven Eistedfod in May. Auditions for the school dance team will take place over the next couple of weeks during lunch time. Students will be notified at morning lines when auditions will be held.

The number of troupes entered into the Eisteddfod and the number of students selected in each troupe will be decided during the audition process. If you have any questions or concerns, please contact Miss Howes via the school number.

Did You Know?

Almost 3 in every 100 children have a peanut allergy.

Even trace amounts of peanut or tree nuts can trigger an allergy and kill a child.

Anaphylaxis is a serious allergic reaction that can cause itchy rash, throat or tongue swelling, shortness of breath, vomiting, light-headedness, low blood pressure and cardiac arrest. Tragically, Australian children have died at school from nut allergies.

There are several children at Milton Public School who have a life-threatening nut allergy. Our school strongly encourages you to help minimise harm to those students by **not sending nuts or nut products to school**. Your assistance and understanding is very much appreciated.

Welcome Kindergarten 2020



CANTEEN ROSTER

| | |
|---------------|---------------|
| Wednesday 5/2 | Shirley |
| | Jenny |
| Thursday 6/2 | Julian |
| | Christian |
| Friday 7/2 | Cheryl |
| | Christian |
| Monday 10/2 | Steph |
| | Di |
| Tuesday 11/ | Keli |
| | Helper Needed |



This week's special at the canteen



**Frozen Milo
Cups
80c**

Available lunch only.

Working with Children Check (WWCC – Volunteers)

Each year a new 'Working with Children' declaration or the sighting of a current 'Working with Children' certificate is required prior to volunteers commencing at school. We appreciate all the help given by parents and friends who assist in the classroom, canteen, at sporting events, on excursions, scripture and Volunteer Reading Programs. If you are volunteering, please complete a 'Working with Children' declaration at the office. Please remember to bring your 100 points of identification. Working with Children Checks are available from the school office, online or at the RMS (Roads & Maritime Services).

Scholastic Book Club

Order forms for issue 1 of Scholastic Book Club will be issued to students this week. Please ensure orders are returned to school or placed online by Friday 14th February.

COMMUNITY NEWS

The following articles have been submitted for inclusion in our parent newsletter and are not part of Milton Public School curriculum.

Ulladulla — Travelling Film Festival

Travelling Film Festival returns to Ulladulla in March 2020. Australia's longest running travelling film festival, showcases Australian and international features, documentaries and short films in regional Australia. www.sff.org.au



Term 1 - 2020 After School Program

After school lessons start again Monday 3rd and Wednesday 5th of February 2020 Beginner's progressive Learn to Surf package of 8 sessions during the Term with your choice of Mondays &/or Wednesdays.

This is a not for profit 'Half Price' deal for the local community of \$25 for each lesson.

Active Kids vouchers can be used for payment.

Best quality Softboards, Wetsuits & Rashie's are supplied by our Surf School at no extra cost. Great low student to instructor ratios, Surf safety education and lots of fun for the kids. Flexible start times of 4pm/4.30pm through to 6pm finish.

Contact Geoff on 0411 392 221 or info@mollymookbeachsrfschool.com for details and bookings.

Milton Ulladulla Football Club

is holding an Open Day on the 22nd of February up at Lighthouse Oval. It will be running from 10am through to 12noon with drills being run by coaches for players to join. We are serving a BBQ lunch, there will be help available with registration, Sports Power will be there selling gear and a heap of information on display. The purpose of this is to allow parents and children to participate and experience the sport before committing to a full season.

On the 7th of March Milton Ulladulla Football Club will be hosting a club from Sydney (Forest Rangers Football Club) to bring money to the area inline with the 'bring an empty esky' campaign. We are aiming to have 6 to 10 teams playing on the day against the visiting club. To try and raise funds for families affected by the bushfires we are also holding a raffle. More details will follow over the next few weeks.



1st BURRILL-ULLADULLA SCOUT GROUP

Come & join in the fun.

Joeys 5-8yrs (Wed 5:15-6:15)

Cubs 8-11yrs (Tue 5:30-7:00)

Scouts 11-15yrs (Mon 6:00-8:00)

Venturers 15-18yrs (Tue 6:00-8:00)

**FOR MORE INFORMATION CALL
TRACY 0417 342 580**

Heart & Soul Dance Studios

DANCE CLASSES

Where: MILTON PUBLIC SCHOOL HALL

Ballet, Lyrical, Contemporary, Jazz
Baby Ballerinas to yr 6 students

**NO Dance Competitions,
NO Uniforms,
Just Dancing from the Heart & Soul**

Website <https://heart-soul-dance-studios.webnode.com>

CONTACT US:
KOTO & GYPSY THOMPSON
MOBILE 0422 315 203
EMAIL kotonthompson@gmail.com

**Come Join
The Fun
Now!**

DSA
SOUTH COAST REGION

Disabled Surfers South Coast
Sunday 22nd March 2020
Gerroa 'SMILES ON DIALS DAY'

Meet at Emery Park, just off Riverleigh Ave and Park Rd, Gerroa

Check-in no later than 9.00am - Group-care facility participants limit of 6 per facility

A fun day surfing experience for any person with a disability, no matter how challenging, with complete water supervision.

Registration for Participants is \$10
Free registration for Volunteer Helpers and for giving up your time you will receive FREE Sausage Sizzle on the day.

Last year over 150 people had a great day
check out the video on Face Book:
<https://www.facebook.com/disabledsurfersassociationouthcoast>
Or for more information and who to contact view
disabledsurfers.org/nsw/south-coast-branch or www.disabledsurfers.org

DSA Inc Insurance Covers All Events: both public liability and personal accident

See you there putting "Smiles on Dials"

nab AFL Auskick

Register Now!

Interested in playing footy in 2020
Do you still have an Active Kids Voucher and not sure what you can use it for?

Why not use it and register for club auskick now? Leaving the new one for another sport after January 1st 2020!

ALSO DON'T FORGET OUR AFL AUSKICK HOLIDAY PROGRAMS RUNNING IN JANUARY 2020!

WHERE: Ulladulla Sports Park
WHEN: Tuesday 21st Jan 9.30am - 1pm
AGE: Boys & Girls turning 5 to 12 years old
CONTACT: John Dyball 0411 226 086

1. Visit play.afl/auskick
2. Enter your postcode
3. Select the centre
4. Complete the process

"Use your 'Active Kids Voucher' from Services NSW to cover the club cost of registration."

Visit play.afl/auskick

Pedestrian Safety

It has been noticed that some parents are not stopping at the childrens' crossing in Thomas Street to allow pedestrians, usually our students, safe passage across the street.

The message to all parents is simple and easy to follow: Be vigilant and do the right thing! The safety of our children is paramount and is everyone's responsibility. It is far more important to be aware of people around you than securing a parking space outside the front gate.

I will be asking the Ranger to attend school during our busy drop-off and pick-up times to enforce the rules that are in place to ensure our kids can enter and leave school safely.

BAWLEY SWIM 'N' SAFE

- LEARN TO SWIM
- AQUA AEROBICS
- HYDROTHERAPY
- PRIVATE LESSONS
- GROUP CLASSES

ALISON LESSLIE - 0428 412 475
www.bawleyswimnsafe.com

GLEN STAUNTON'S TENNIS COACHING

Glen - Junior Davis Cup Player.
Lana - 2009 World Games Gold medalist.
Kim - Former No.1 Junior in the World.
Over 30 years experience.

- ELITE INDIVIDUAL COACHING
- JUNIOR COACHING CLASSES FOR ALL AGES
- MODIFIED TENNIS PROGRAMME FOR 5-8 YRS
- LADIES & GENTS DOUBLES COMBINATION COACHING & TRAINING

ALSO TENNIS RACQUET RESTRINGS
& REPAIRS TO ALL STANDARDS

Serious about your tennis?
We're the coaches for you!

4454 2888
GARRADS LANE, MILTON

Road safety

Keeping safe around school crossings

For your child's safety, it's very important to ensure they use the school crossing.

At all crossings you must wait on the footpath, at least one step back from the edge of the road.

If there's a School Crossing Supervisor, wait until they have stopped the traffic and called you to cross.

Children's crossings are usually part-time crossings that operate before and after school hours. They can also operate at other times when children use the crossing for excursions or during break times. When 'Children Crossing' flags are displayed, you must stop at the white line if pedestrians are waiting to cross. Drivers must remain stationary until the crossing is clear of pedestrians.

For more information on keeping our kids safe around schools visit the parents section on safetytown.com.au

Children's crossings

For your child's safety, it's very important to ensure they use the school crossing.

At all crossings you must wait on the footpath, at least one step back from the edge of the road.

If there's a School Crossing Supervisor, wait until they have stopped the traffic and called you to cross.

Children's crossings are usually part-time crossings that operate before and after school hours. They can also operate at other times when children use the crossing for excursions or during break times. When 'Children Crossing' flags are displayed, you must stop at the white line if pedestrians are waiting to cross. Drivers must remain stationary until the crossing is clear of pedestrians.

For more information on keeping our kids safe around schools visit the parents section on safetytown.com.au

Lives lost on NSW roads.
Our goal is zero.

TOWARDS ZERO

Little and Early Learning Labs are on offer at three different locations in April 2020:
Wollongong, Loftus and Batemans Bay!

PROGRAM INFORMATION

Little and Early Learning Labs is an enrichment program designed for students who are excelling in their area of interest within their year group, and are seeking a challenging and fun experience during the school holidays.

All workshops are held over one (mini-labs) or two days, and are presented by teachers with specialist training or a specific interest in gifted education. There will be sponsorship places available for some participants - please see more details on how to apply for these places on the website.

Batemans Bay Labs on offer:

| | |
|---|---|
| BATEMANS BAY LITTLE LEARNING LABS (2 DAYS) (FOR YEARS 1 & 2 DURING 2020) WHEN: 15 AND 16 April, 2020 WHERE: UOW Batemans Bay campus TIME: 9:00am - 2:00pm FEE: \$160 | BATEMANS BAY EARLY LEARNING LABS (2 DAYS) (FOR YEARS 3 TO 6 DURING 2020) WHEN: 15 AND 16 April, 2020 WHERE: UOW Batemans Bay campus TIME: 9:00am - 3:30pm FEE: \$170 |
|---|---|

Loftus Labs (Southern Sydney) on offer:

| | |
|---|--|
| LOFTUS (\$5) EARLY LEARNING LABS (2 DAYS) (FOR YEARS 3 TO 6 DURING 2020) WHEN: 16 AND 17 April, 2020 WHERE: UOW Loftus campus TIME: 9:00am - 3:30pm FEE: \$170 | LOFTUS (\$5) EARLY MINI-LABS (1 DAY) (FOR YEARS 3 TO 6 DURING 2020) WHEN: 15 April, 2020 WHERE: UOW Loftus campus TIME: 9:00am - 3:30pm FEE: \$90 |
|---|--|

Wollongong Labs on offer:

| | |
|--|---|
| WOLLONGONG LITTLE LEARNING LABS (1 & 2 DAYS) (FOR YEARS 1 & 2 DURING 2020) WHEN: 14 AND 15 April, 2020 WHERE: University of Wollongong (Wollongong campus) TIME: 9:00am - 2:00pm FEE: \$85 (1 day) \$160 (2 days) | WOLLONGONG EARLY LEARNING LABS (1 & 2 DAYS) (FOR YEARS 3 TO 6 DURING 2020) WHEN: 14 TO 17 April, 2020 WHERE: University of Wollongong (Wollongong campus) TIME: 9:00am - 3:30pm FEE: \$90 (1 day) \$170 (2 days) |
|--|---|

WORKSHOP DETAILS

A full list of the available workshops to choose from will be posted on the website in April 2020 when applications open. Please note that the program books up quite quickly, so ensure you submit your application as early as possible.

APPLICATION & CONTACT DETAILS

For more detailed workshop descriptions, how to apply, FAQ's, and the online application form, please go to: uow.info/learninglabs

For all other enquiries, please contact the Learning Labs team via:
E: learning-labs@uow.edu.au P: (02) 4221 5557 Facebook: www.facebook.com/UOWandP

NOTE FOR SCHOOLS:
Please provide Learning Labs details to your students and families as soon as possible to avoid disappointment. Workshops fill up quickly!

Quality dance tuition in a fun, relaxed atmosphere

Everybody DANCE NOW

St Martins Church Hall, Ulladulla

0414 463 512

**Thank you to these
local businesses for
supporting our Parent
News**

LifestylePlumbers

| Solutions for all your plumbing needs |

0417 416 699

TERM LEARN TO SWIM PROGRAM

CLASSES AVAILABLE FOR:

- Parent and Baby
- Pre-school children
- School age children
- Squads
- Adults



PROGRAM DATES: 28th January to 9th April 2020 (11 weeks)

DON'T DELAY – BOOK NOW! Ph: 4444 8811

Make an appointment TODAY



**Meet Chris,
your local Mobile Lender,
phone 0421 274 155.**
Your best interests at heart.

Bendigo Bank
Bigger than a bank.

TAILOR-MADE Financial Services

Debt Advice & Mortgage Broking

Emily Jenkins

BCom, Dip FS (FP)

e emily.jenkins@tmfs.com.au

p 4455 7800 | m 0434 365 427 | w tmfs.com.au



Refinancing | First Home Buyers | Property Investors
Debt Consolidation | Insurance & Risk Protection
Financial Advice | Cash flow coaching

Tailor-Made Financial Planning Pty Ltd ABN 33 088 879 270 trading as Tailor-Made Financial Services is an Authorised Representative of Hillross Financial Services Limited ABN 77 003 323 055, AFSL 232705.

TOP 5 REASONS TO SEE YOUR NATUROPATH...

1. Stress & sleep
2. Gastrointestinal health
3. Hormonal balance
4. Immune support & infections
5. Children's health



**emma
wilson**
naturopath
support. strengthen. restore.

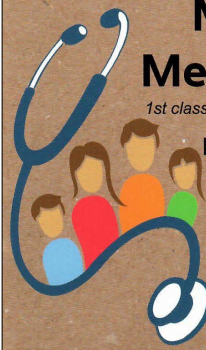
m. 0490 255 792

e. emmawilsonnaturopath@gmail.com



Milton Family Medical Practice

1st class care in a beautiful and caring environment



BULK BILLING for children under 16

DISCOUNT for pensioners/
health card holder

walk in or call on **4454 4555**
141 Princes Hwy
MILTON 2538

open all school holidays

태권도
AUTHENTIC TAEKWON-DO
THE KOREAN ART OF SELF-DEFENCE
suitable for men, women & children
ALL TAEKWON-DO PEOPLE WELCOME
CAN RETAIN BELTS AND TRAIN

ST MARTINS CHURCH
Monday + Wednesday 6pm - 8pm
for further details phone or email
ROB 0412 774 787
robabbett58@gmail.com

INTERNATIONAL INSTRUCTOR AND EXAMINER
ROBERT RABBETT 4TH DEGREE BLACK BELT (ITF)

**Calm-Abiding
Meditation**

8 WEEK COURSE
STARTS ...
Thursday 20th February
6:00pm - 8:00pm
with Ben Adcock

or Tuesday 18th February
9:30am - 11:30am
with Jacky Howarth

**Manjushri
Buddhist Centre**
40 Wason Street Milton

COST ... \$75 or \$65 members/concession & returning students
Sponsorship applications available

Bookings Essential - LIMITED SPACES
Contact Jo 0410 548 244 mbcmilton@gmail.com

OPSM

**80% OF
CHILDHOOD
LEARNING
IS VISUAL.**
SEE THE POTENTIAL.

Visit OPSM Ulladulla today
Rowens Arcade Ph: 4455 1288

**Milton
Garage**
4454 4958

David Berecny
Milton-garage@outlook.com

Servicing All Makes & Models,
Log Book Servicing, Rego, Tyres, Brakes, Suspension

32B Princes Highway Milton 2538

PARTY with Livewire Studios

At our themed studio or out & about at your choice of location. Over 50 themes to choose from!

Guaranteed, hassle-free fun
info@livewiretheatre.com
Ph: 0414 536 414

games & prizes
face painting
balloon sculpting
discos & karaoke
art, slime, science
invitations
lolly bags
cakes & catering
pinatas
jumping castles
and so much more!

"Thank you so much for such an amazing party. She said it was the best birthday she has ever had, and wants it there again next year!" - G. Ricketts

PEAK SPORTS AND LEARNING
OUTSIDE SCHOOL HOURS CARE

ULLADULLA
Operating from Ulladulla Public School

| Before School Care | After School Care | Vacation Care |
|--------------------|-------------------|---------------|
| 7:00am-9:00am | 3:00pm-6:00pm | 7:00am-6:00pm |

Peak Sports & Learning is an outside school hours care provider with a difference. Our philosophy is based on the concept of FITNESS, EDUCATION & FUN! The three ingredients to getting children actively involved in sports, literacy and numeracy and most of all having rewarding, fun experiences in the process.

Servicing: Ulladulla Public School, Milton Public School and St Mary's Star of the Sea

Child Care subsidies available. Enrolment online. Contact our office for more information.

1300 467 325 | admin@peaksportslearning.com.au | www.peaksportslearning.com.au

JNC WELDING & FABRICATION

- Aluminium
- Stainless Steel
- Welding Services
- Fabrication
- Custom Projects
- Sheetmetal
- Modifications & repairs
- Machining

Joe Campisi
17 Deering Street ULLADULLA
PH: 0488 239 761